

EMODELS

SINCE 2010

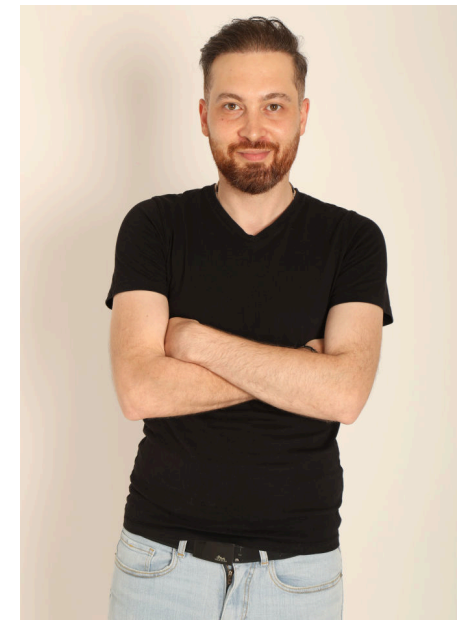


Sargis G

EMODELS

SINCE 2010

Fortune Executive - office 2101 Cluster T - Jumeirah Lake Towers - Dubai - UAE



height 180cm | 5'11" chest 96cm | 38" waist 80cm | 31.5"
eyes color Light Brown hair color Dark Blonde